

## 说 明 PREFACE

160F 通用汽油机是重庆力帆内燃机有限公司采用国内外先进技术自行研制开发的单缸、倾斜式、四冲程、强制风冷汽油机。该机具有设计先进、结构紧凑、性能可靠、维修方便、使用经济、调速方便等特点，其配套用途广泛，是发电、旅游、野外作业、娱乐场所、建筑机械、农业机械、林业机械等领域的理想配套动力。

《160F 通用汽油机零部件图册》是我公司为了方便用户精心编制而成，该图册涵盖了零部件的基本情况，如：简图、名称、数量等，用户订购零件时请参考本册，若与实机不同之处，以实机为准。

《160F 通用汽油机零部件图册》的所有版权属于重庆力帆内燃机有限公司，任何团体和个人不得非法翻印或复制。如有更改，恕不另行通知。

Combine with all the specialty and advantages of the same models at home and abroad, 160F, being of 4-stroke, single cylinder with force air-cooled type, is one of the newly gasoline engines developed by our Co. It is characterized by advanced design, compact struction, reliable performance, convenient service, low fuel consumption and easy regulation. The engine is widely used as ideal power in many fields such as generating set, tour, open working, public place of entertainment, construction machine, agricultural machinery, etc.

For the sake of customer's convenience, we carefully compile the **PART CATALOGUE FOR 160F ENGINE**, which covers the main informations of parts, such as illustrations, names, quantities, etc. Please refer to this book when you order the parts. If any difference in the book from the actual engine status, please do as per the real.

The copyright of this catalogue belongs to Chongqing Lifan Power Co., Ltd. Any group or individual is forbidden to reprint or copy any item from it. The catalogue is subject to change without notice.

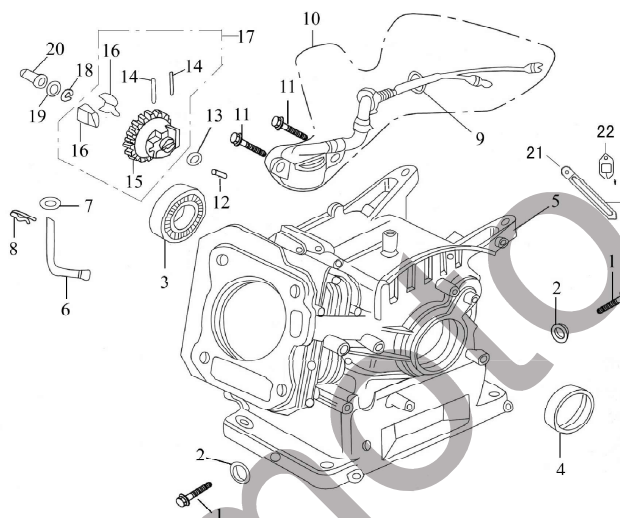
# 目 录

## INDEX TO ENGINEER GROUP

E-1	曲轴箱组合.....	1
	<b>CRANKCASE ASSY</b>	
E-2	曲轴箱盖组件.....	3
	<b>CRANKCASE COVER ASSY</b>	
E-3	气缸头 气缸头盖总成.....	4
	<b>CYLINDER HEAD &amp; CYLINDER HEAD COVER ASSY</b>	
E-4	曲轴 活塞连杆总成.....	5
	<b>CRANKSHAFT, PISTON &amp; CONNECTING</b>	
E-5	凸轮轴装配组合 气门摇臂组合.....	7
	<b>COMBINATION OF CAM SHAFT &amp; VALVE ROCKER</b>	
E-6	化油器总成 .....	9
	<b>CARBURETOR ASSY</b>	
E-7	燃油箱组成.....	11
	<b>FUEL TANK ASSY</b>	
E-8	空气滤清器总成.....	12
	<b>AIR CLEANER ASSY</b>	
E-9	排气消声器.....	13
	<b>MUFFLER</b>	

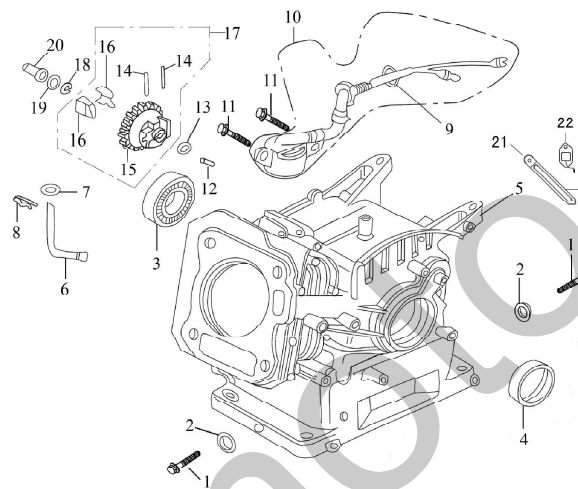
E-10	反冲起动机部件.....	14
	<b>RECOIL STARTER</b>	
E-11	调速控制系统.....	16
	<b>REGULATING CONTROL SYSTEM</b>	
E-12	飞轮组件.....	18
	<b>FLYWHEEL</b>	
E-13	点火线圈组件.....	19
	<b>IGNITION COIL</b>	
E-14	贴花.....	20
	<b>EMBLEM</b>	

### E-1 曲轴箱组合 CRANKCASE ASSY



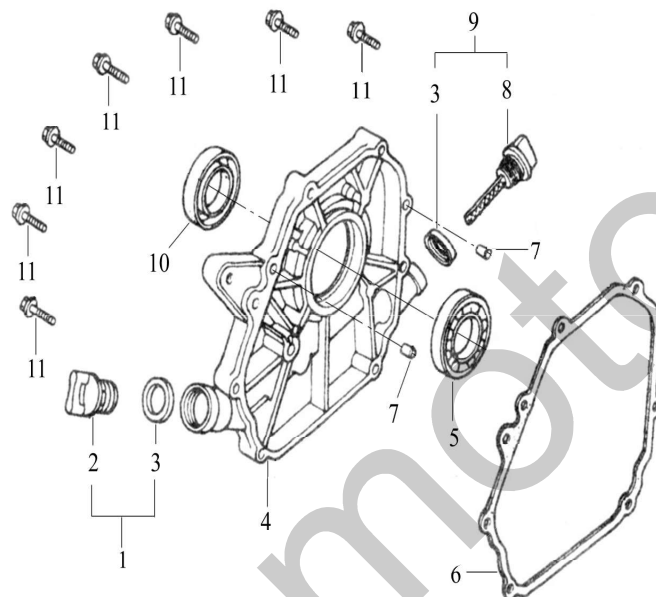
序号 Ref. No.	零部件代号 Part No.	零部件名称	Description	数量 Quantity	备注 Remark
1	11115/168F	放油螺塞	Drain plug	2	
2	11116/168F	放油螺塞垫圈	Washer	2	
3	GB/T276-94	轴承 6205	Bearing 6205	1	
4	11320	曲轴油封组件 (二) ( $\phi 22 \times \phi 35 \times 6$ )	Oil seal, crankshaft	1	
5	11100	曲轴箱组合	Crankcase	1	
6	26111/168F	调速摆杆	Regulating sway bar	1	
7	26113/168F	调速摆杆垫片	Washer	2	
8	26112/168F	调速摆杆锁夹	Split pin	1	
9	GB/T6177-86	螺母 M10	Nut M10	1	
10	27400/168F	机油传感器组合	Oil sensor	1	
11	GB/T16674	螺栓 M6×14	Bolt M6×14	2	
12	25115/168F	调速轴	Regulating shaft	1	
13	25118/168F	调速从动齿轮垫片	Washer, driven gear	1	
14	25116/168F	飞块销	Pin	2	

### E-1 曲轴箱组合 CRANKCASE ASSY



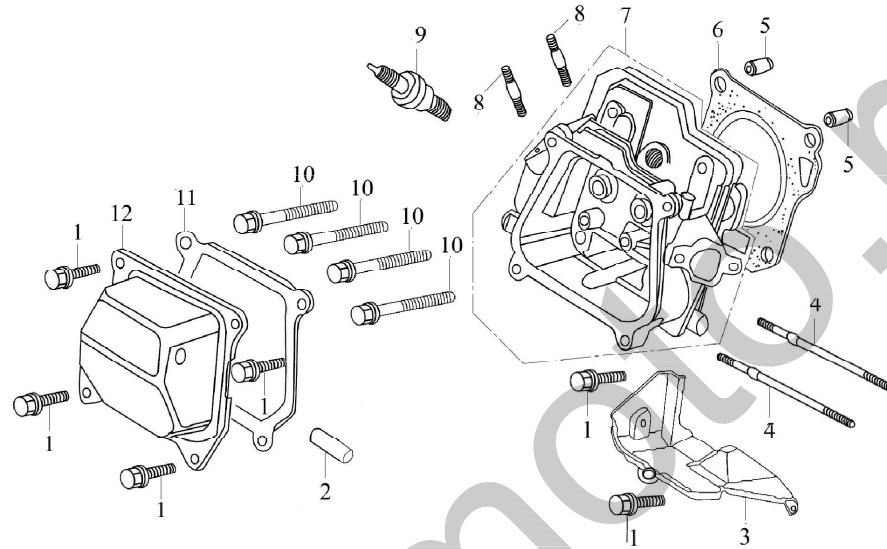
序号 Ref. No.	零部件代号 Part No.	零部件名称	Description	数量 Quantity	备注 Remark
15	25111/168F	调速从动齿轮	Driven gear, regulator	1	
16	25114/168F	调速飞块	Flying block	2	
17	25100/168F	调速从动齿轮组合	Driven gear assy, regulator	1	
18	25117/168F	调速轴卡圈	Snap ring	1	
19	25113/168F	调速滑套垫片	Washer	2	
20	25112/168F	调速滑套	Sliding sleeve	1	
21	19316/173F	固线卡	Clip	1	
22	27500/168F	单向导通器组合	Diode	1	

## E-2 曲轴箱盖组件 CRANKCASE COVER ASSY



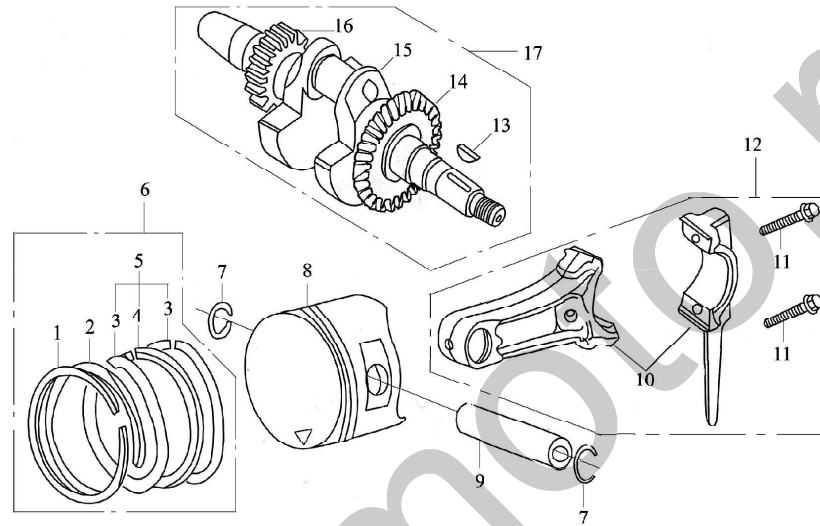
序号 Ref. No.	零部件代号 Part No.	零部件名称	Description	数量 Quantity	备注 Remark
1	15520/168F	机油塞组件	Oil plug with Seal	1	
2	15521/168F	机油塞	Oil plug	1	
3	15512/168F	机油尺密封圈	Seal	2	
4	11211	曲轴箱盖	Crankcase cover	1	
5	GB/T276-94	轴承 6205	Bearing 6205	1	
6	11114	曲轴箱垫片	Gasket, crankcase	1	
7	11113/168F	定位销	Set pin	2	
8	15511/168F	机油尺	Dipstick	1	
9	15510/168F	机油尺组件	Dipstick with seal	1	
10	11120	曲轴油封组件 (一) ( $\phi 22 \times \phi 41.3 \times 6$ )	Oil seal, crankshaft	1	
11	GB/T5789-86	螺栓 M6×28	Bolt M6×28	7	

### E-3 气缸头 气缸头盖总成 CYLINDER HEAD & CYLINDER HEAD COVER ASSY



序号 Ref. No.	零部件代号 Part No.	零部件名称	Description	数量 Quantity	备注 Remark
1	GB/T16674	螺栓 M6×12	Bolt M6×12	6	
2	17217/168F	废气管	Air duck	1	
3	19112	下导风罩	Lead wind cover	1	
4	17218	进气口双头螺栓 M6×113	Stud M6×113	2	
5	12117/168F	气缸头定位销 φ10×16	Set pin φ10×16	2	
6	12220	气缸头密封垫组件	Gasket, cylinder head	1	
7	12100	气缸头组合	Cylinder head Assy	1	
8	18214/168F	排气口双头螺栓 M8×34	Stud M8×34	2	
9	27100/168F	火花塞组合 F6TC	Spark plug F6TC	1	
10	12118	气缸头螺栓 M8×55	Bolt M8×55	4	
11	12212/168F	气缸头盖密封圈	Gasket, cylinder head cover	1	
12	12200/168F	气缸头盖组合	Cylinder head cover Assy	1	

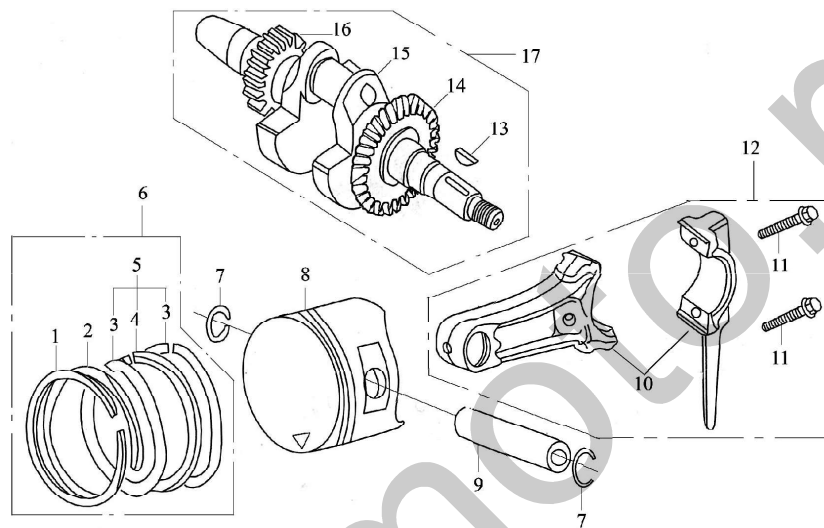
### E-4 曲轴 活塞连杆总成 CRANKSHAFT, PISTON & CONNECTING



序号 Ref. No.	零部件代号 Part No.	零部件名称	Description	数量 Quantity	备注 Remark
1	13411	活塞环 (一)	Piston ring ( I )	1	
2	13412	活塞环 (二)	Piston ring ( II )	1	
3	13422	侧环	Side rail	2	
4	13421	衬簧	Expander	1	
5	13420	油环组件	Scraper ring set	1	
6	13400	活塞环组合	Piston ring assy	1	
7	13313/1P64FV	活塞销挡圈	Piston pin circlip	2	
8	13311	活塞	Piston	1	
9	13312/1P64FV	活塞销	Piston pin	1	
10	13211	连杆	Shank	1	
11	13213/1P64FV	连杆螺栓	Bolt	2	
12	13200	连杆组合	Connecting rod assy	1	

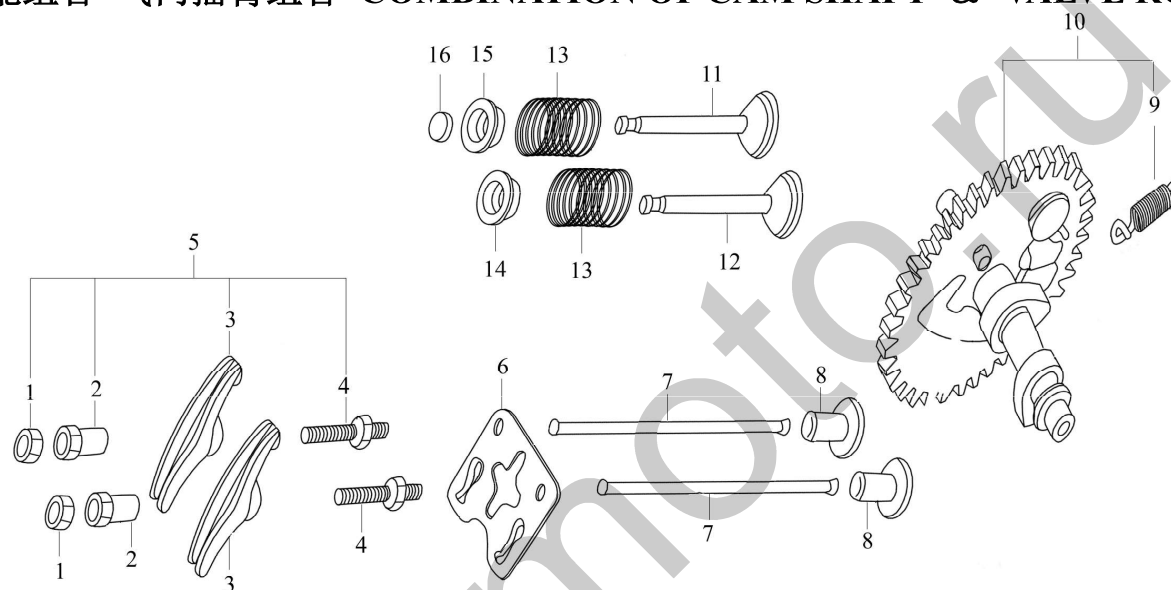


### E-4 曲轴 活塞连杆总成 CRANKSHAFT, PISTON & CONNECTING



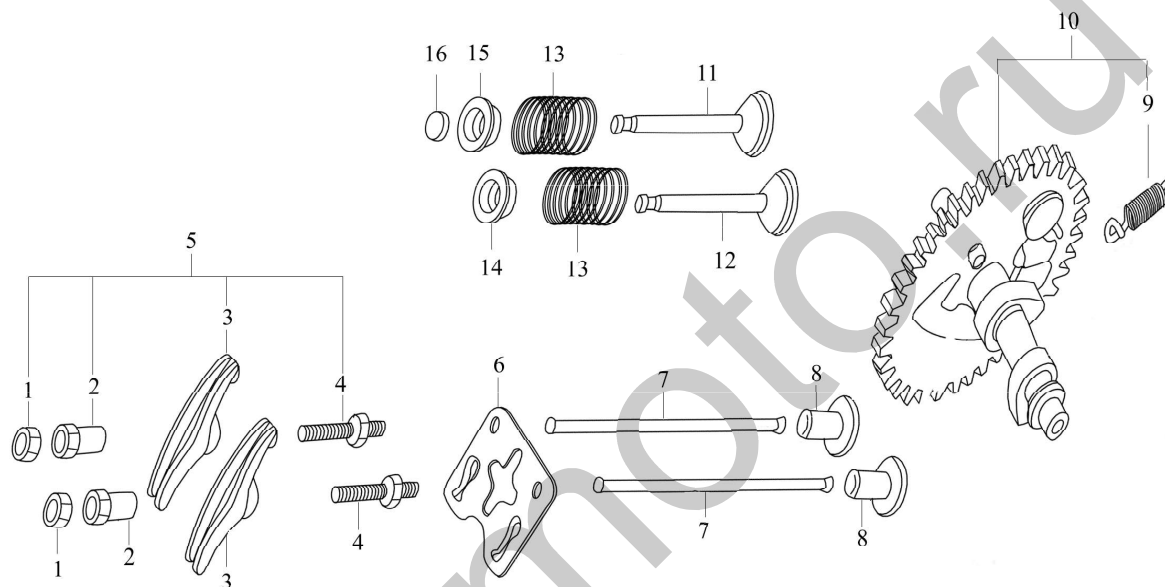
序号 Ref. No.	零部件代号 Part No.	零部件名称	Description	数量 Quantity	备注 Remark
13	13112/168F	半圆键	Woodruff key	1	
14	13114/168F	调速主动齿轮	Drive gear	1	
15	13111	曲轴	Crankshaft	1	
16	13113	正时主动齿轮	Timing driving gear	1	
17	13100	曲轴组合	Crankshaft assy	1	

### E-5 凸轮轴装配组合 气门摇臂组合 COMBINATION OF CAM SHAFT & VALVE ROCKER



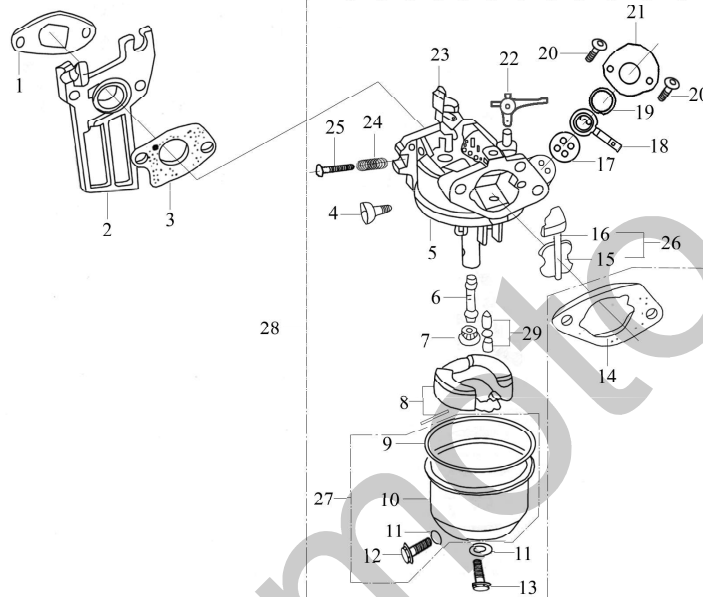
序号 Ref. No.	零部件代号 Part No.	零部件名称	Description	数量 Quantity	备注 Remark
1	14314/168F	气门间隙调节螺母	Lock nut	2	
2	14312/168F	摇臂轴座销	Sleeve	2	
3	14311/168F	气门摇臂	Valve rocker	2	
4	14313/168F	气门间隙调节螺栓	Adjusting bolt for valve gap	2	
5	14310/168F	气门摇臂装配组合	Valve rocker assy	2	
6	14221/1P64FV	推杆导架	Pusher guide	1	
7	14210/1P64FV	推杆组件	Pusher	2	
8	14315/168F	挺柱	Tappet	2	
9	14122/168F	甩块弹簧	Extension spring	1	
10	14100	凸轮轴装配组合	Camshaft Assy	1	
11	14412	排气门	Exhaust valve	1	
12	14411	进气门	Intake valve	1	

### E-5 凸轮轴装配组合 气门摇臂组合 COMBINATION OF CAM SHAFT & VALVE ROCKER



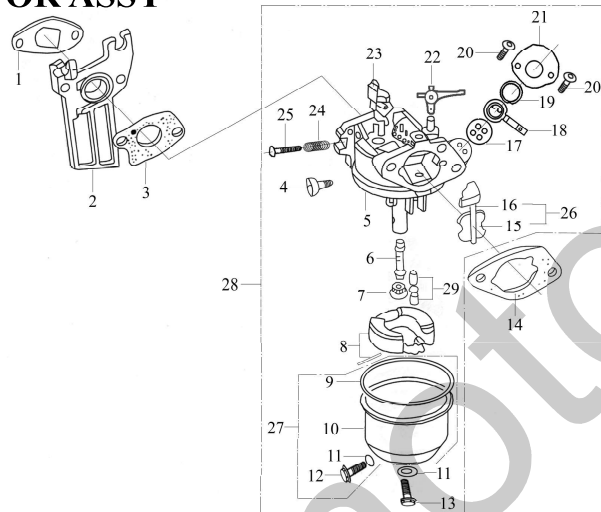
序号 Ref. No.	零部件代号 Part No.	零部件名称	Description	数量 Quantity	备注 Remark
13	14414/168F	气门弹簧	Valve spring	2	
14	14413/168F	气门弹簧座 (一)	Spring seat, intake valve	1	
15	14415/168F	气门弹簧座 (二)	Spring seat, exhaust valve	1	
16	14416/168F	气门顶帽	Cap	1	

## E-6 化油器总成 CARBURETOR ASSY



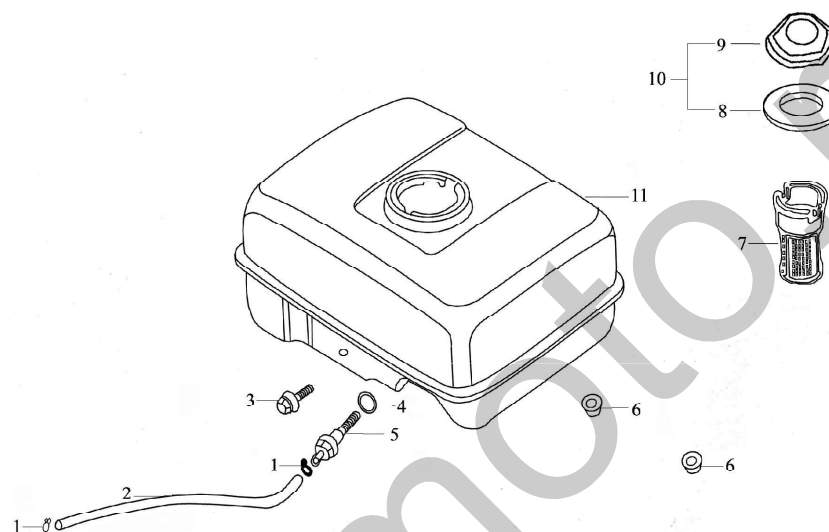
序号 Ref. No.	零部件代号 Part No.	零部件名称	Description	数量 Quantity	备注 Remark
1	17219/168F	进气口垫片	Inlet gasket	1	
2	16112	化油器接块	Connecting block	1	
3	16113/168F	化油器垫片	Carburetor gasket	1	
4	16341/168F	节气门调整螺钉	Idle adjustment screw	1	
5	16111	化油器本体	Mixture chamber body	1	
6	16244	主喷油管	Main nozzle	1	
7	16243	主喷油孔	Main jet	1	
8	16220/168F	浮子组件	Float	1	
9	16216/168F	浮子室密封垫	Float chamber gasket	1	
10	16211/168F	浮子室	Float chamber	1	
11	16215/168F	浮子室放油螺钉垫	Washer	2	
12	16214/168F	浮子室放油螺钉	Float chamber drain Screw	1	
13	16212/168F	浮子室螺钉	Screw	1	
14	17113	空滤器垫片	Air cleaner gasket	1	

## E-6 化油器总成 CARBURETOR ASSY



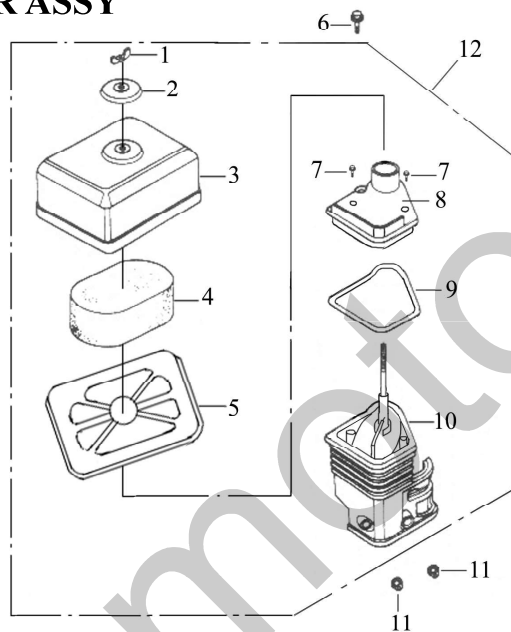
序号 Ref. No.	零部件代号 Part No.	零部件名称	Description	数量 Quantity	备注 Remark
15	16321	阻风门	Choke	1	
16	16322	阻风门轴	Choke stem	1	
17	16365	化油器四孔垫圈	Airproof washer	1	
18	16363	化油器开关手柄	Throttle lever	1	
19	16364	化油器开关密封圈	Washer	1	
20	GB/T818-H	螺钉 M4×6	Screw M4	2	
21	16362	化油器开关盖	Cover	1	
22	16114/168F	阻风门开关	Choke switch	1	
23	16250	节气门组件	Throttle unit	1	
24	16332	混合比调整弹簧	Spring, mixture adjustment screw	1	
25	16331	混合比调整螺钉	Mixture adjustment screw	1	
26	16320	阻风门组件	Choke unit	1	
27	16210	浮子室组件	Float chamber	1	
28	16100	化油器总成	Carburetor Assy	1	
29	16230	浮子油针组件	Float needle	1	

## E-7 燃油箱组成 FUEL TANK ASSY



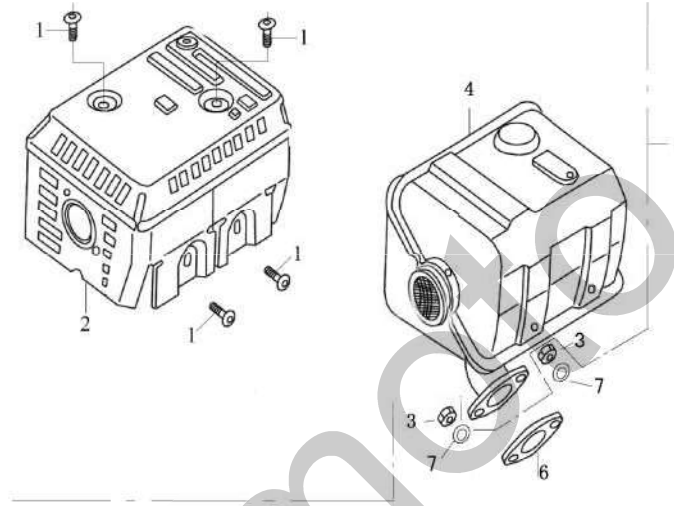
序号 Ref. No.	零部件代号 Part No.	零部件名称	Description	数量 Quantity	备注 Remark
1	16622/168F	油管夹	Pipe clamp	2	
2	16621/168F	出油管	Outlet pipe	1	
3	GB/T16674	螺栓 M6×22	Bolt M6×22	1	
4	16634/168F	出油接头密封垫	Packing ring	1	
5	16514/168F	出油接头	Connector	1	
6	GB/T6177	螺母 M6	Nut M6	2	
7	16610/168F	过滤杯组件	Filter cup	1	
8	16414/168F	密封垫圈	Packing ring	1	
9	16411/168F	燃油箱盖	Fuel filler cap	1	
10	16400/168F	燃油箱盖组合	Fuel filler cap with packing ring	1	
11	16510	燃油箱组件	Fuel tank	1	

### E-8 空气滤清器总成 AIR CLEANER ASSY



序号 Ref.No.	零部件代号 Part No	零部件名称	Description	数量 Quantity	备注 Remark
1	17111	空滤器盖螺母	Wing nut	1	
2	17150	空滤器盖压板组件	Air cleaner top cover sub-assy	1	
3	17112	空滤器盖	Air cleaner cover	1	
4	17120	空滤器滤芯组件	Filter element	1	
5	17125	空滤器骨架	Bracket, filter element	1	
6	GB/T5789	螺栓 M6×25	Bolt M6×25	1	
7	GB6560-86	螺钉 M4×12	Bolt M4×12	2	
8	17214	空滤器连接盘	Air cleaner base	1	
9	17212	进气管密封圈	Gasket, air cleaner seat	1	
10	17200	进气管组合	Air cleaner housing assy	1	
11	GB/T6177	螺母 M6	Nut M6	2	
12	17100	空滤器总成	Air cleaner assy	1	

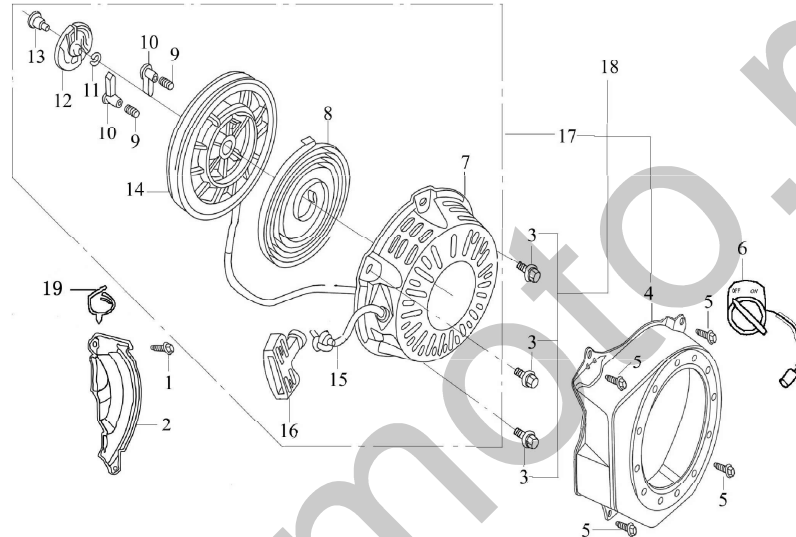
## E-9 消声器组件 MUFFLER



序号 Ref.No.	零部件代号 Part No	零部件名称	Description	数量 Quantity	备注 Remark
1	GB/T818-85-H	螺钉 M5×8	Screw M5×8	4	
2	18200	消声器护罩组合	Muffler hood	1	
3	GB/T6170	螺母 M8	Nut M8	2	
4	18100	消声器内胆组合	Muffler	1	
5	18000	消声器总成	Exhaust muffler	1	
6	18215/168F	排气口垫片	Exhaust gasket	1	
7	GB/T96	垫片	Washer	2	

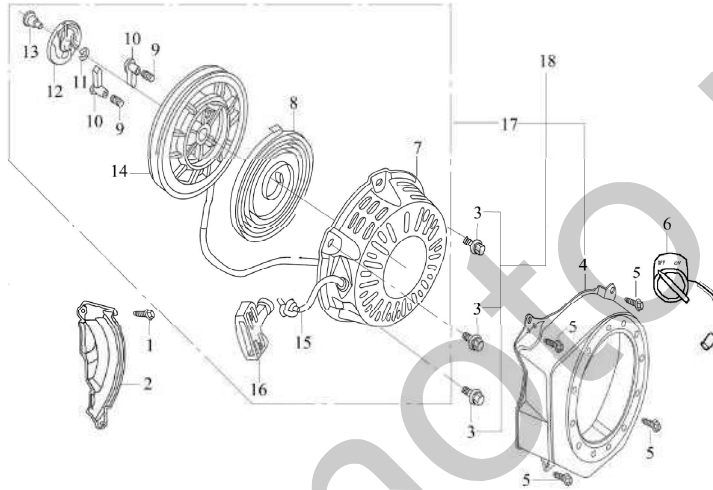


## E-10 反冲起动器部件 RECOIL STARTER



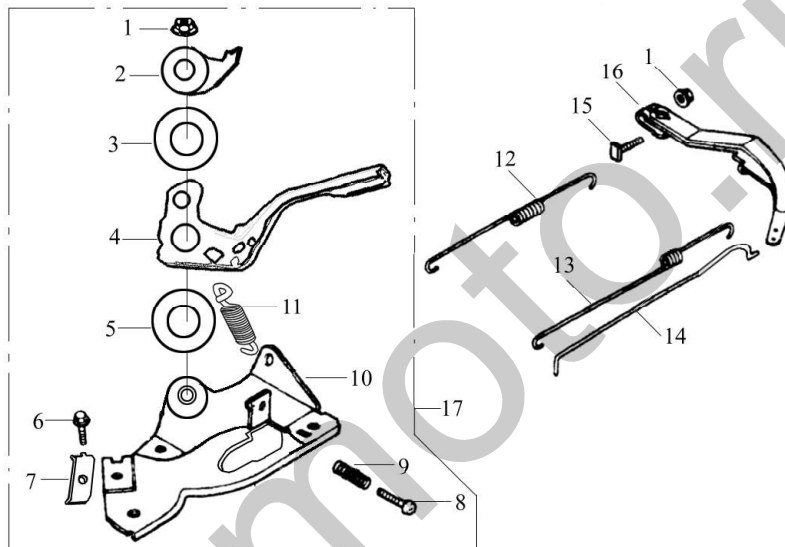
序号 Ref.No.	零部件代号 Part No	零部件名称	Description	数量 Quantity	备注 Remark
1	GB/T16674.2	螺栓 M6×18	Bolt M6×16	1	
2	19311	曲轴箱侧板	Crankcase side plate assy	1	
3	GB/T16674.2	螺栓 M6×8	Bolt M6×8	3	
4	19200	风扇罩组合	Fan hood assy	1	
5	GB/T16674.2	螺栓 M6×12	Bolt M6×12	4	
6	27300/168F	熄火开关组合	Engine switch	1	
7	23211/168F	外壳	Casing	1	
8	23114/168F	盘簧	Spiral spring	1	
9	23112/168F	棘爪弹簧	Ratchet spring	2	
10	23115/168F	棘爪	Ratchet	2	
11	23111/168F	摩擦弹簧	Friction spring	1	
12	23116/168F	弹簧盖	Spring lid	1	

## E-10 反冲起动器部件 RECOIL STARTER



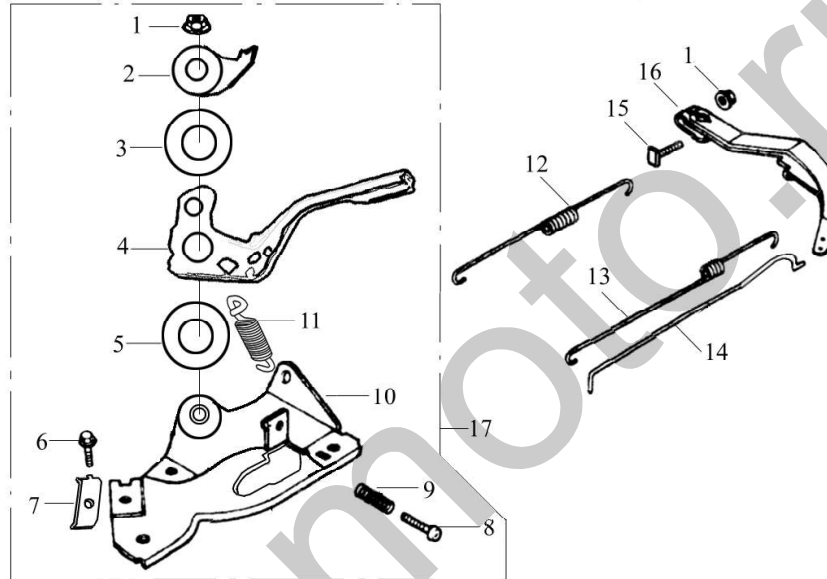
序号 Ref.No.	零部件代号 Part No	零部件名称	Description	数量 Quantity	备注 Remark
13	23113/168F	轴位螺钉	Set screw	1	
14	23117/168F	起动器卷轴	Starter rolls	1	
15	23118/168F	拉绳	Rope	1	
16	23119/168F	拉手	Pulling handle	1	
17	23200/168F	反冲起动器外壳组合	Recoil starter	1	
18	23100	反冲起动器总成	Recoil starter assy	1	

## E-11 调速控制系统 REGULATING CONTROL SYSTEM



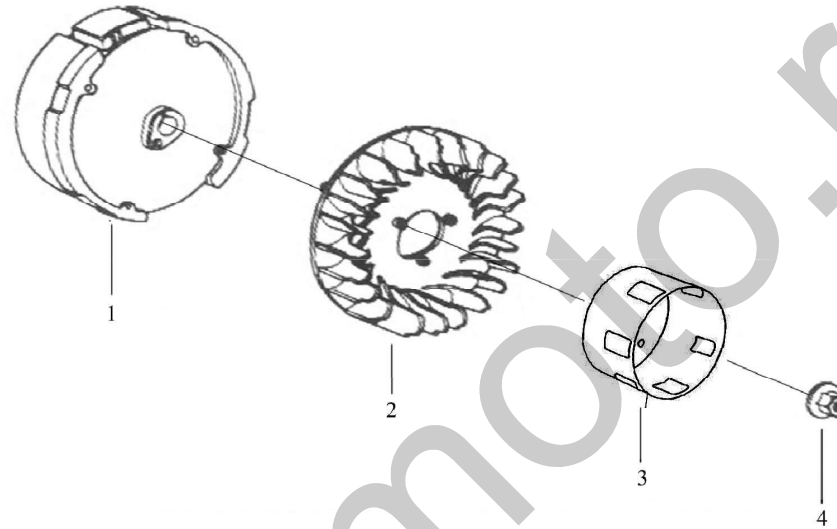
序号 Ref.No.	零部件代号 Part No	零部件名称	Description	数量 Quantity	备注 Remark
1	GB/T6177	螺母 M6	Nut M6	2	
2	26224	定位板	Setting panel	1	
3	26223	弹簧片	Spring patch	1	
4	26221	转速控制臂	Handgrip	1	
5	26222	垫片	Washer	1	
6	GB818-85-H	螺栓 M5×16	Bolt M5×16	1	
7	26213/168F	执行器压板	Clamp	1	
8	GB/T818-85-H	螺栓 M5×25	Bolt M5×25	1	
9	26215/168F	调速弹簧	Regulating spring	1	
10	26210	调速支撑板组件	Support panel assy	1	
11	26214/168F	拉簧	Spring	1	

## E-11 调速控制系统 REGULATING CONTROL SYSTEM



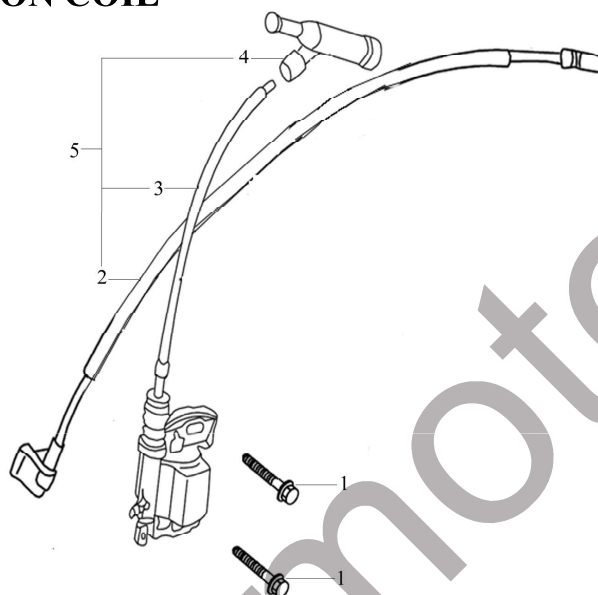
序号 Ref.No.	零部件代号 Part No	零部件名称	Description	数量 Quantity	备注 Remark
12	26117	复位弹簧	Back spring	1	
13	26118	微调速弹簧	Fine regulating spring	1	
14	26115	调速拉杆	Pulling rod	1	
15	26116/168F	调速臂紧固螺栓	Lock bolt	1	
16	26114/168F	调速臂	Regulating arm	1	
17	26200	调速支架组合	Regulating frame assy	1	

## E-12 飞轮部件 FLYWHEEL



序号 Ref.No.	零部件代号 Part No	零部件名称	Description	数量 Quantity	备注 Remark
1	23300	飞轮组合	Flywheel	1	
2	19111	飞轮风扇	Flywheel fan	1	
3	23316/168F	起动套	Starting flange	1	
4	23317/168F	飞轮螺母	Flywheel Nut	1	

### E-13 点火线圈组件 IGNITION COIL



序号 Ref.No.	零部件代号 Part No	零部件名称	Description	数量 Quantity	备注 Remark
1	GB/T16674.2	螺栓 M6×22	Screw M6×22	2	
2	27230/168F	熄火线组件	Engine stop cable	1	
3	27210/168F	点火线圈组件	Ignition coil	1	
4	27220/168F	火花塞帽组件	Spark plug cap	1	
5	27200/168F	点火线圈组合	Ignition coil assy	1	

## E-14 贴花 EMBLEM



序号 Ref.No.	零部件代号 Part No	零部件名称	Description	数量 Quantity	备注 Remark
1	91111	型号贴花	Model label	1	
2	91113/168F	空滤器保养贴花	Emblem, maintenance of air cleaner	1	
3	91115/168F	阻风门开关贴花	Emblem, choke lever	1	
4	91114/168F	龟兔贴花	Emblem, tortoise and rabbit	1	
5	91112/168F	加注机油贴花	Emblem, adding oil	1	
6	91117/168F	注意一氧化碳贴花	Emblem, Notice: CO	1	
7	91118/168F	注意燃油贴花	Emblem, fuel	1	
8	91119/168F	注意使用前加机油贴花	Emblem, Note: add oil before using	1	